

VTScada[®]

by Trihedral

Version 12.2

Installing
all core SCADA
components



Slides updated May 28, 2025.

Trihedral, VTScada, and VTScadaLIGHT are registered trademarks of Trihedral Engineering Limited.



VTScada[®]

by Trihedral

Introducing Version 12.2



Sharing Data
on a Massive
Scale

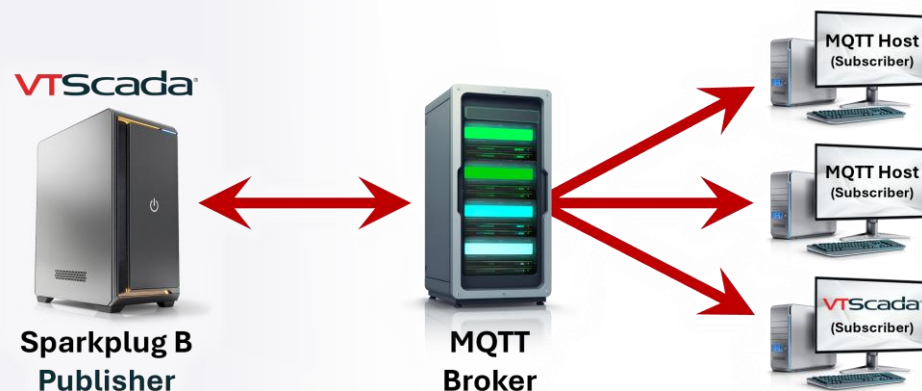
SHARE DATA ON A MASSIVE SCALE



Sparkplug B Publisher

EMPLOY VTSCADA AS A POWERFUL EDGE NODE

The new **Edge Node Tag** publishes to MQTT Brokers and, paired with a new **Edge Device Tag**, can support a Sparkplug B-compliant MQTT network right from your application.



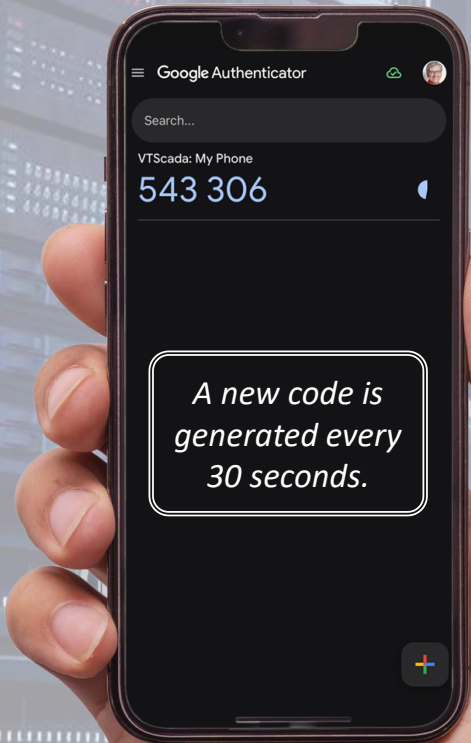
- Share data between IoT apps including other VTScada apps.
- Delivery initiated by Edge of Network Devices (i.e., Report by Exception).
- VTScada apps can emulate multiple devices and include multiple Publishers.

ENHANCED SECURITY

Two-Factor Authentication

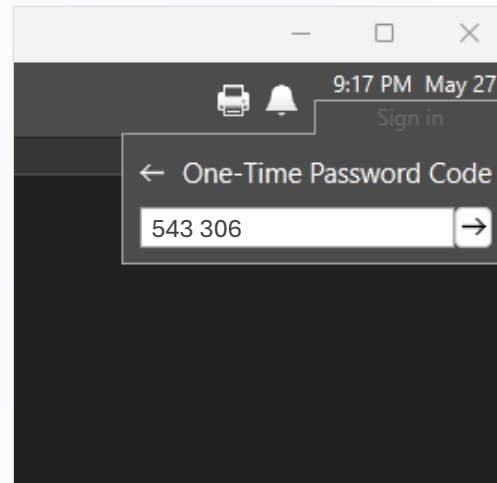
FOR SECURE SYSTEM-WIDE LOGIN

Once enabled, users must enter a time-sensitive code from an authenticator, along with their password each time they access workstations or Thin Clients.



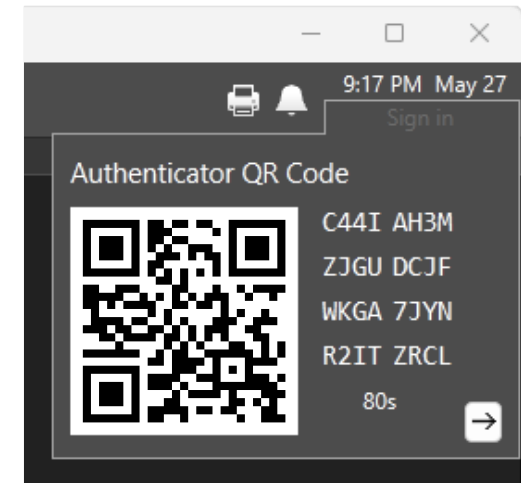
For Each Login

Enter the code after successfully entering the username & password.



One-Time Setup

To configure the authenticator, simply scan the QR code.



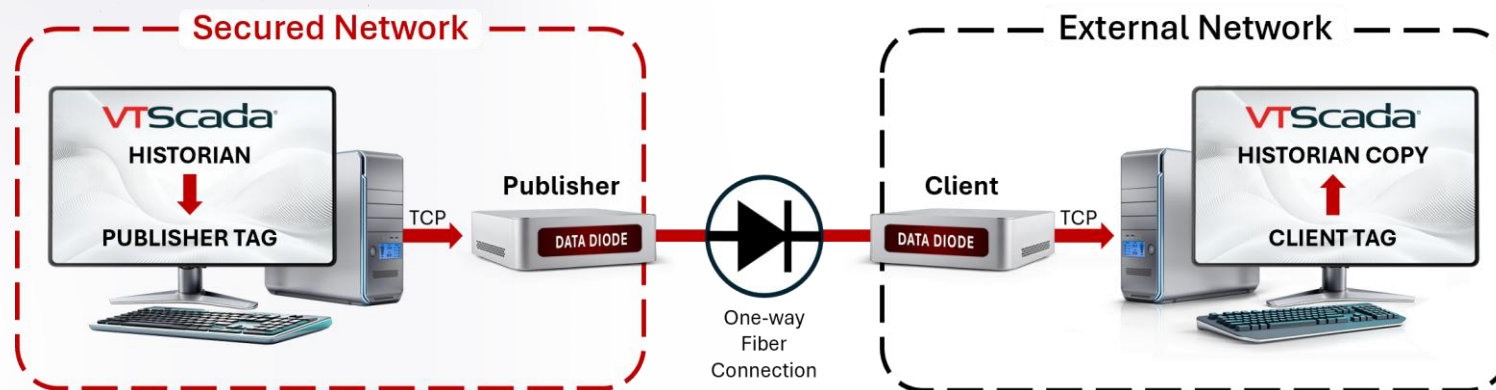
ENHANCED SECURITY



Industrial Monitoring & Control

VTScada Data Diode

SHARE DATA FROM YOUR SECURE NETWORK WITH ZERO RISK



Replicate a VTScada Historian on an application outside your firewall via a one-way fiber connection between dedicated Data Diode devices (sold separately).

Once copied, share data with third-party systems with no risk to your secure network.

New Widgets

- Start/Stop Buttons
- Start From Date/Time Button
- Show Stats Button
- Sync Indicator
- Historian Status now has a new Publish Status column

IMPROVED PRODUCTIVITY

Customized Data Entry Forms

CREATE THE PERFECT TOOL TO CAPTURE YOUR MANUAL DATA

New Widgets allow you to create custom forms for entering manually collected data, like lab results or inventory counts, into the VTScada Historian.




- Values are not committed until the form is complete and submitted by the user.
- Time Offset options allow you to record time-stamped data after the fact.

EXPANDED COMPATIBILITY

Windows Server 2025® Compatible

READY FOR THE LATEST PC HARDWARE

Forward compatibility means the newest VTScada version supports the latest Windows OS.



AN OS BUILT FOR DATA CENTERS

The performance, security, and virtualization tools needed for Enterprise cloud systems.

FBx Series DNP3 Driver

FOR EMERSON FLOBOSS FLOW COMPUTERS

New Oil & Gas driver reads from Emerson's FB1000, FB2000, and FB3000 flow computers.

- Also writes gas config values to FB3000 devices.
- Easy-to-use Address Select feature.
- New Widgets: File Read Sequence Info and Stats Dialog.

REDUCED HARDWARE COST

VTScada now supports up to 50 meter runs per flow computer * requiring fewer devices.

** On supported devices.*



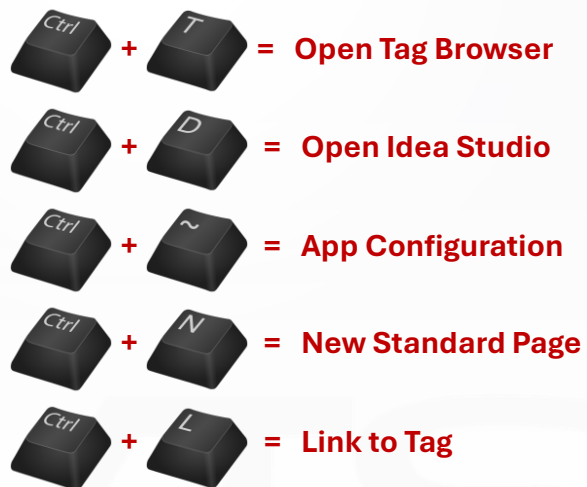
IMPROVED PRODUCTIVITY

Keyboard Shortcuts

WORK FASTER WITH FEWER MOUSE CLICKS

Over 65 keystroke combinations improve workflow for operators and developers in these modules:

- Application Manager
- Tag Properties
- Title Bar
- Historical Data Viewer
- Tag Browser
- Idea Studio

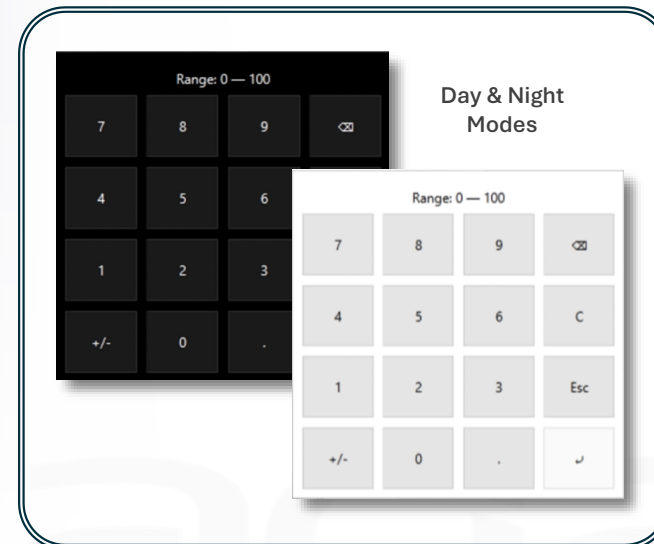


Numeric Onscreen Keypad

PERFECT FOR INDUSTRIAL TOUCHSCREEN PCS

Once enabled, opens for numeric edit field in pages and dialogs instead of the Windows Touch Keyboard.

- Auto selects current value to overwrite.
- Display valid input ranges.
- Block out-of-range values.



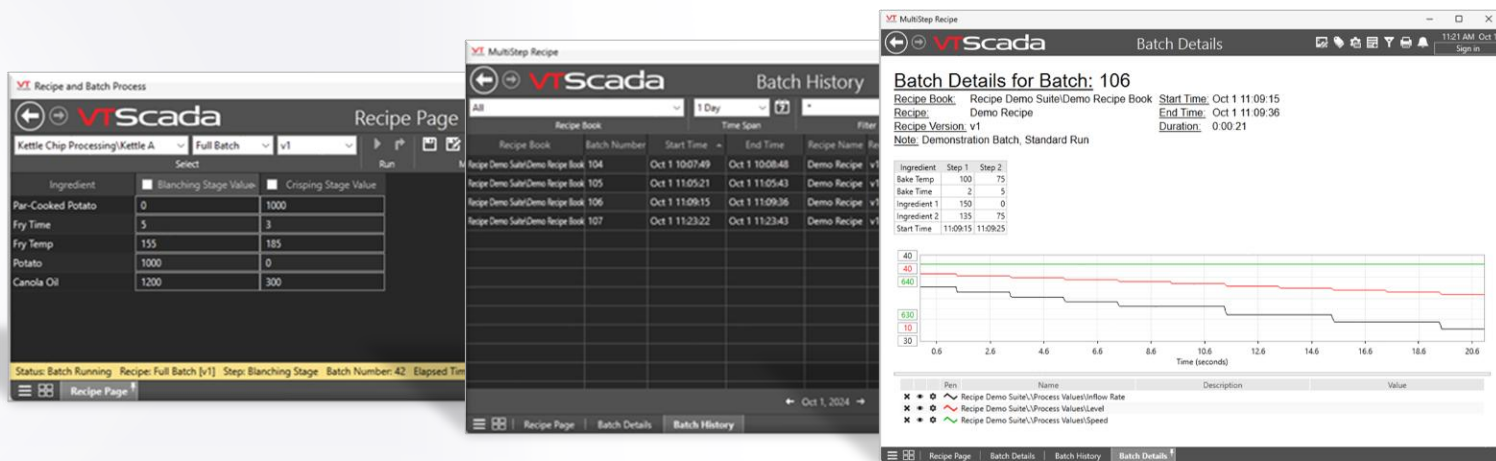
IMPROVED PRODUCTIVITY



Expanded Batch Management

A SEAMLESS OUT-OF-THE-BOX MANUFACTURING WORKFLOW

Run recipes with multiple steps. See historical batch information in a filterable batch history page and open a batch details page to display specific information about each batch including a configurable HDV.



Externally Start Recipe Batches

Start batches from your existing UI while managing and monitoring with VTScada.

IMPROVED PRODUCTIVITY



Manual Activation

Activation via Browser

1. Use an Internet connected device to scan the QR code or copy the link to another device.
2. Enter the resulting activation code below.



Copy

Activation via Phone

Call +1 902-835-1575 and provide the following information over the phone.

Installation ID: AE6F-BC37-C8E4
Serial Number: 74
VTScada Version: 12.1.63

Enter your 16-character activation code

Activate

Activate Later

Industrial Monitoring & Control

QR Code License Activation

INSTALLING & UPGRADING VTSCADA OFFLINE HAS NEVER BEEN EASIER

When prompted during installation, simply use your internet-connected mobile device to scan a QR code displaying your activation code.

QR CODE ACTIVATION

1. Open your phone's camera and point it at the QR code.
2. Tap the hyperlink that appears.
3. You will be redirected to your 16-character activation code.
4. Enter this below the QR code.
5. Click Activate.

You can still activate offline licenses by copying the URL to an online machine or calling the support number provided.

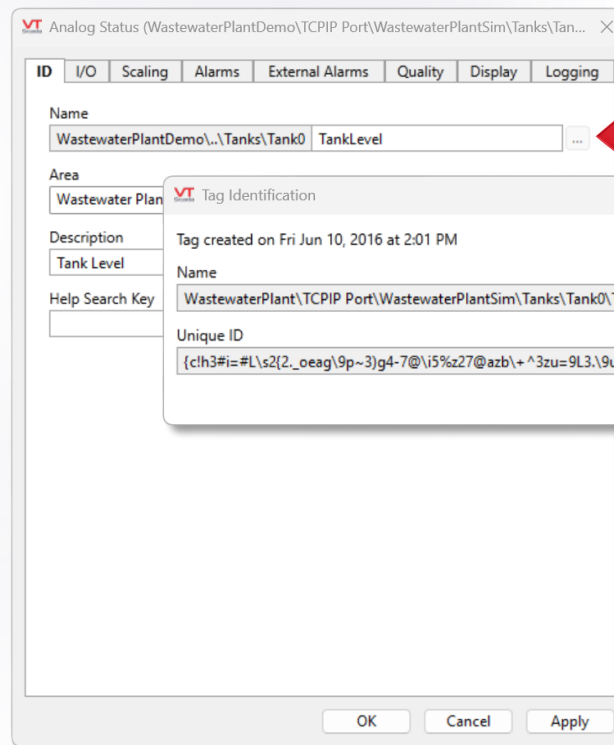
VTScada

IMPROVED PRODUCTIVITY

Tag Identification Dialog With Quick Copy Buttons

EASILY VIEW AND COPY TAG NAMES & UNIQUE IDS

Work faster and reduce errors using the new Tag Identification Dialog found in every ID tab of every Tag Properties Dialog.



Open a dialog with the full tag name and Unique ID.

Use copy buttons to add to your clipboard.

IMPROVED PRODUCTIVITY

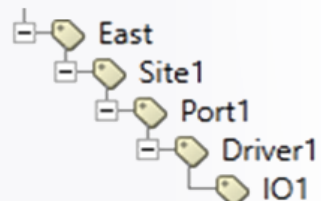
Automatic Linking of Sibling Tags

A BETTER WAY TO ORGANIZE YOUR TAGS

Tags that automatically link to ancestors can now automatically link to uncles and sibling tags.

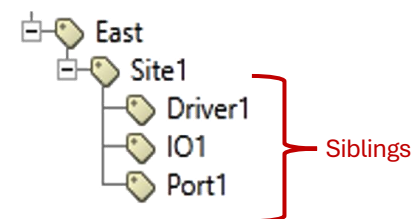
Linked siblings have shorter tag names that are easier to troubleshoot and better fit selectors and reports.

Ancestor Link



IO1 Name
East\Site1\Port1\Driver1\IO1

New Sibling Link



IO1 Name
East\Site1\IO1

AUTOMATIC LINKING OF HISTORIAN TAGS WITH [*Historian]

VTScada now can automatically link to ancestor, uncle, or sibling historian tags.

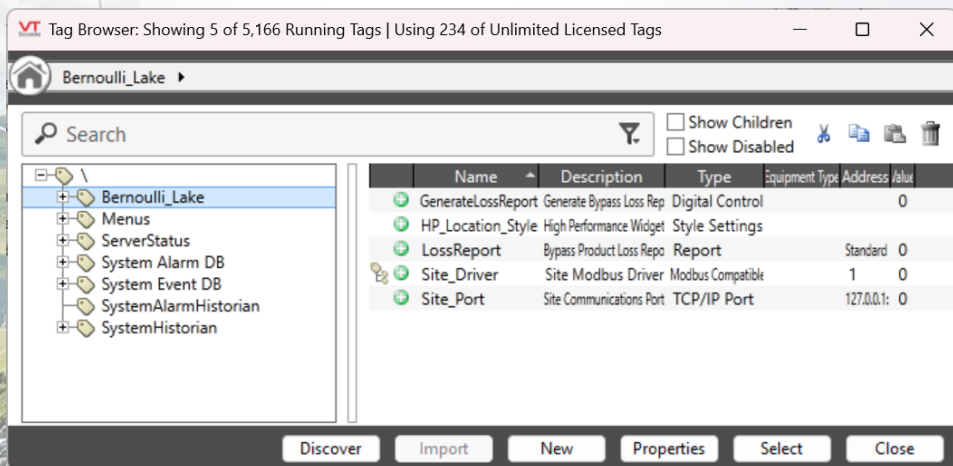


IMPROVED PRODUCTIVITY

Accelerated Tag Browser

ON EVEN THE MOST MASSIVE SYSTEMS

The tag browser now opens up to 50x faster for very large applications. Site list page performance also greatly improved.



Export Just a Subtree of Tags

WHEN EDITING TAGS IN EXCEL®

Instead of exporting the whole tag hierarchy, only export the child tags of a selected parent. When finished, import the subtree back into VTScada.

Modify tags using an external database

You can edit your application's tags directly in an external database.

To do this, you must first export the tags to an external database. After modifying them, you can synchronize your application with the external database. Configuration management will then apply the tag changes you made to the tags in your application.

To complete the synchronize operation, the external tag database must either be updated to stay synchronized with your application or deleted.

If the application is running, you can select a tag as the export root to speed up the export and sync operations. Only that tag and its children will be included in the export. This parameter only applies to exports and the file update part of the sync process. It has no effect on what changes are imported during a sync operation.

When exporting to a Microsoft Access or Microsoft Excel file an option is available to have the file automatically open upon export completion. An application capable of opening these files must be installed on this machine for this option to operate properly.

To import tags you must have the Tag Add/Modify/Delete privileges.

Export Root Tag

Bernoulli_Lake

Output Type:

☒ Use a Microsoft Excel spreadsheet file
☐ Use a Microsoft Access database file
☐ Use an ODBC data source

Clean Up Options:

☒ Update the file after applying changes (increases the time it takes to sync tags)
☐ Delete existing file after applying changes



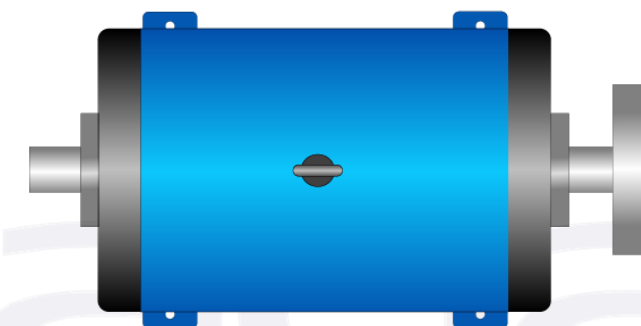
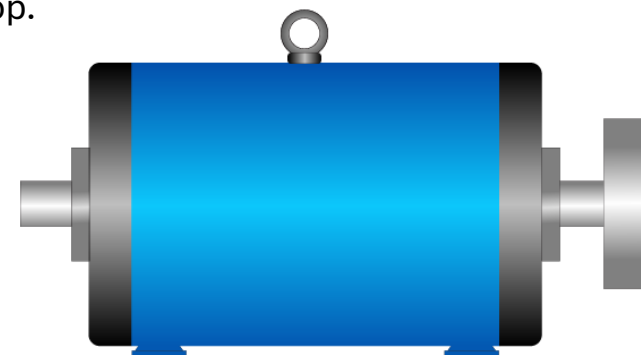
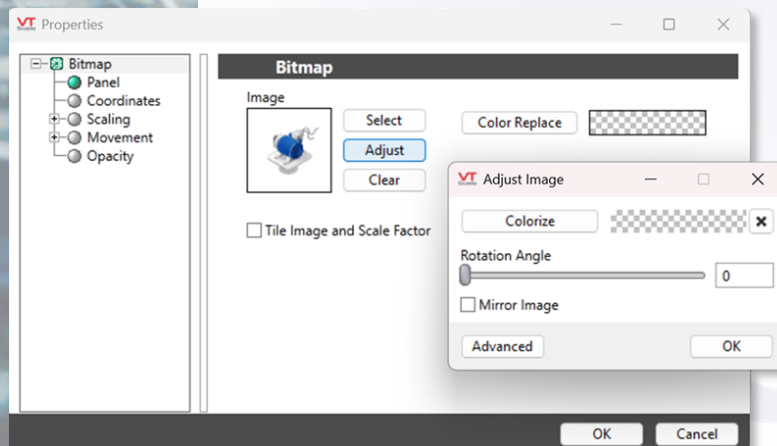
IMPROVED PRODUCTIVITY

SVG Image File Support

SCALABLE FORMAT LOOKS GREAT AT ANY SIZE

Scalable Vector Graphics (SVG) files can be stretched to any size while maintaining a sharp appearance. Ideal for applications that see a lot of rescaling or appear on large monitors.

- Easily drag SVG files into applications from your desktop.
- The Adjust Image Dialog works as expected.
- SVG files not included.



IMPROVED PRODUCTIVITY

F1

New Onboard Help Documentation

IMPROVED FORM AND FUNCTION

Organized by audience, topic, and goals, the intuitive new format helps you quickly find what you need. Each topic begins with useful context to get you moving in the right direction.

As always, hit **F1** from any page or dialog to open context-sensitive help.



Industrial Monitoring & Control

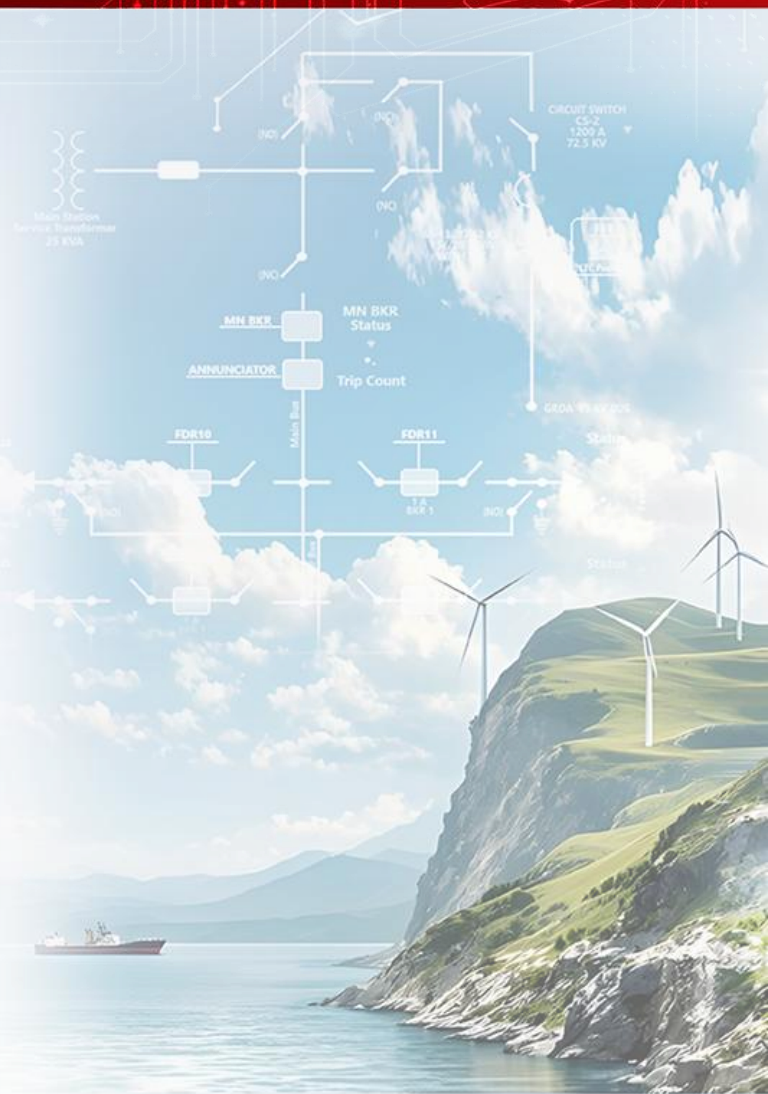
ADDITIONAL NEW FEATURES

Address Assist for Workstation Status Driver

Once a workstation driver is linked to an analog I/O & Calculation tag, a button in the device tag dialog opens an address assist menu with options for workstation status monitoring.

Enhanced Historical Data Viewer

The display of digital plot lines in the HDV has been improved, removing instances of double lines.



ADDITIONAL NEW FEATURES

Refreshed Calendar

Clean modern design lets you jump to distant dates by clicking the month & year at the top.

Click once to jump to a month, click twice to jump to a year.

Arrows on the right flip the calendar in single-month increments.

Twilio® Accepts Spoken Alternative ID

When responding to an alarm notification by phone, you can dial it or speak it out loud.

(Only for alarm notification configured using Twilio).

ADDITIONAL NEW FEATURES

New Publisher Selector Field in I/O Tags

The new Publisher Tag Selector in the I/O or Calculations Tab of tags that publish data. This field displays [*Publisher] by default and auto links to ancestors, uncles, and sibling publisher tags. A checkbox beneath the selector tag will enable or disable publishing.

New Publisher List Tag

Configure one or more I/O tags to publish with multiple Publisher tags.

Link a single Publisher List tag to up to 8 Publisher tags.

Support for 64-Bit Integers

Provides high precision performance.

Most engine-level functions that do math support 64-bit signed integer computation (values from -9223372036854775808 to 9223372036854775807).



Industrial Monitoring & Control

VTScada

Become Productive in Minutes

VTSCADA ACADEMY



Learn at your own pace in
this free online learning
environment.



15-MINUTE QUICK START VIDEO

The fastest way to learn the
VTScada fundamentals.



FOUR-DAY INSTRUCTOR-LED COURSES IN-HOUSE OR ONLINE

Operation & Configuration - Advanced Configuration - Advanced Scripting

VTScada.com/START

SCADA FEST

Our Annual VTScada Users' Conference

Orlando, Florida



In-depth Sessions



1-on-1 Mentoring



Networking Socials



Awards

Each year, users, developers, and decision makers from around the world flock to Orlando to learn to accelerate their business from the team that knows VTScada best. This two-day event is packed with in-depth seminars, 1-on-1 mentoring, and truly memorable networking opportunities.

ScadaFest.com